

Port Operations/Weather (04-19-2024 0800 Hours)

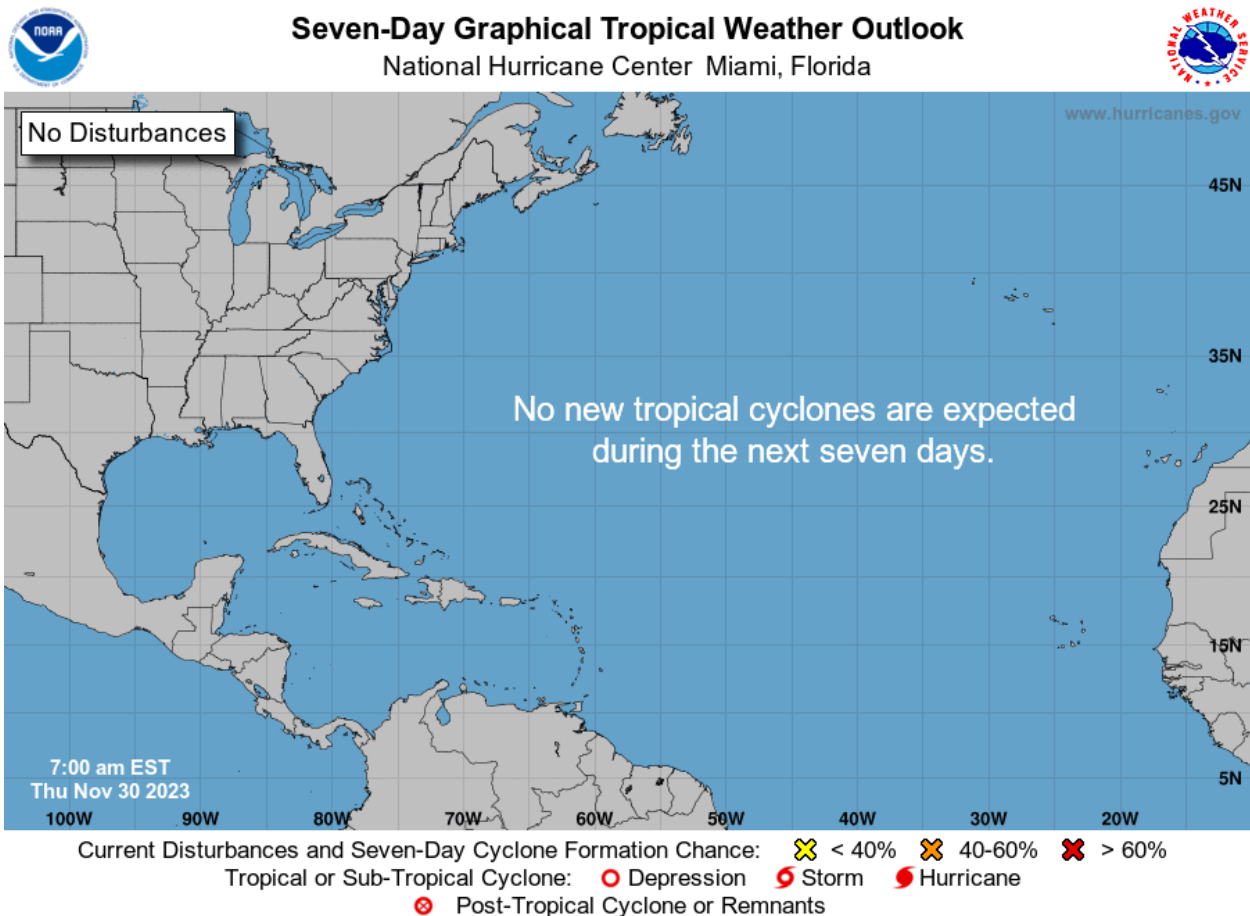
MARINE SAFETY & SECURITY INFORMATION BULLETIN (MSSB)

Port Status USCG Captain of the Port Mobile – **Port Status: NORMAL**

See Below For Details

NHC Active Tropical Cyclones

The Atlantic hurricane season runs from June 1st through November 30th.



Tropical Weather Outlook Text

Tropical Weather Discussion

ZCZC MIATWOAT ALL
TTAA00 KNHC DDHHMM

Tropical Weather Outlook
NWS National Hurricane Center Miami FL
700 AM EST Thu Nov 30 2023

For the North Atlantic...Caribbean Sea and the Gulf of Mexico:

Tropical cyclone formation is not expected during the next 7 days.

\$\$
Forecaster Papin
NNNN

Quick Links and Additional Resources

TROPICAL CYCLONE FORECASTS

[Tropical Cyclone Advisories](#)

[Tropical Weather Outlook](#)

[Audio/Podcasts](#)

[About Advisories](#)

MARINE FORECASTS

[Offshore Waters Forecasts](#)

[Gridded Forecasts](#)

[Graphiccast](#)

[About Marine](#)

SOCIAL MEDIA



[NHC on Facebook](#)



[Twitter](#)



[YouTube](#)



2023

Atlantic Tropical Cyclone Names

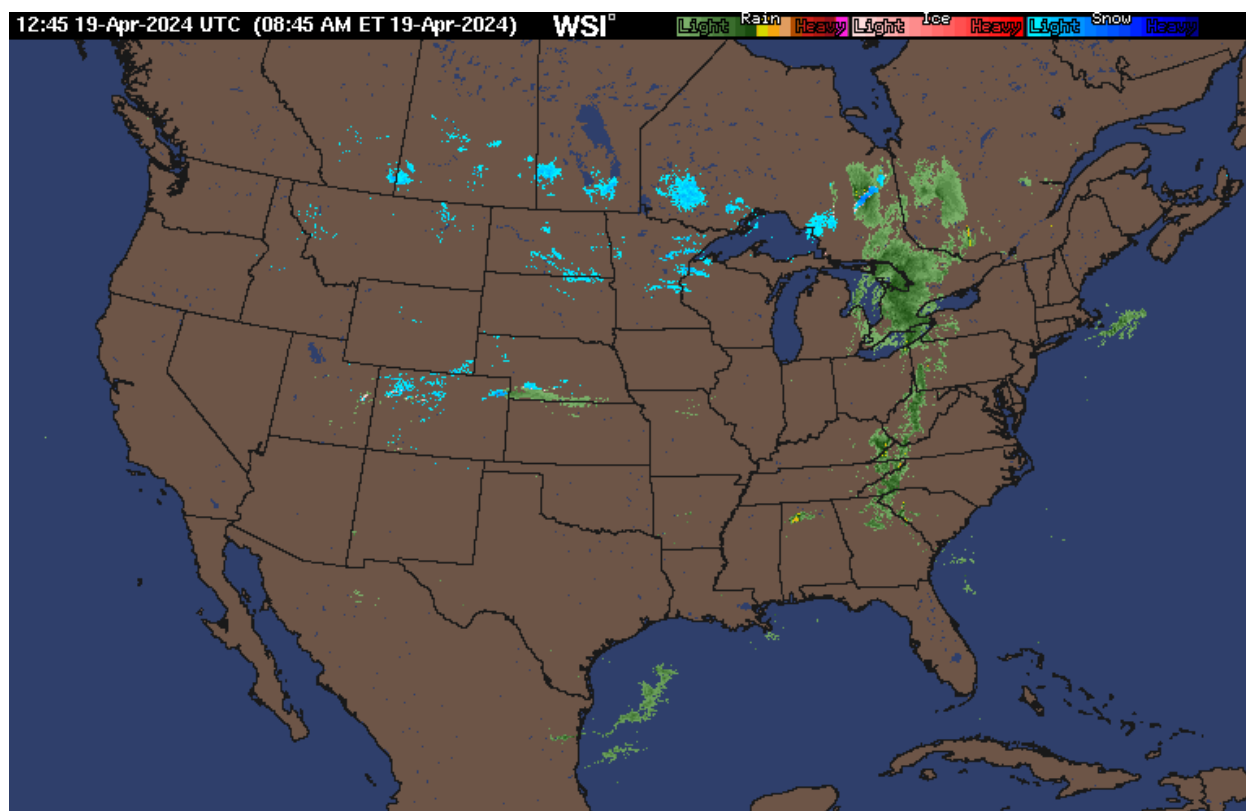
Arlene	Harold	Ophelia
Bret	Idalia	Philippe
Cindy	Jose	Rina
Don	Katia	Sean
Emily	Lee	Tammy
Franklin	Margot	Vince
Gert	Nigel	Whitney



Source: National Hurricane Center

~~ARLENE, BRET, Cindy, Don, Emily, Franklin, Gert,
Harold, Idalia, Jose, Katia, Lee, Margot, Nigel,
Ophelia, Philippe, Rina, Sean, Tammy, Vince~~

INTELLICAST 2024



Port of Pascagoula Marine Conditions / Weather Forecast

Winds at Petit Bois Island:

West Northwest (300 degrees true) 2.9 knots/gusting 3.0 knots

Seas/Swell Info (NDB 42012):

Southeast (146 degrees true) 2.3 feet @ 5.0 seconds

Pascagoula Tides:

High: 19th/2109 0.91

Low: 19th/0529 0.33

Sunset: 19th/1924

Sunrise: 20th/0620

GMZ532-192215
Mississippi Sound
408 AM CDT Fri Apr 19 2024

TODAY

Southeast winds 5 to 10 knots. Waves 1 foot or less, then around 2 feet this afternoon. Areas of dense fog early this morning.

TONIGHT

South winds 5 to 10 knots. Waves 1 foot or less. Patchy fog after midnight.

SATURDAY

South winds around 5 knots, increasing to 5 to 10 knots in the afternoon. Waves 1 foot or less. Patchy fog in the morning. A slight chance of showers in the afternoon.

SATURDAY NIGHT

Southeast winds 5 to 10 knots, becoming northeast after midnight. Waves 1 foot or less. A slight chance of showers in the evening, then a chance of showers after midnight.

SUNDAY

North winds 5 to 10 knots, increasing to 10 to 15 knots in the afternoon. Waves around 2 feet. Showers in the morning, then showers likely with a slight chance of thunderstorms in the afternoon.

SUNDAY NIGHT

North winds 10 to 15 knots. Waves 2 to 3 feet. A chance of showers in the evening.

MONDAY

North winds 10 to 15 knots, diminishing to 5 to 10 knots in the afternoon. Waves 2 to 3 feet.

MONDAY NIGHT

North winds 5 to 10 knots, becoming northeast after midnight. Waves around 2 feet.

TUESDAY

Southeast winds 5 to 10 knots. Waves around 2 feet.

TUESDAY NIGHT

Southeast winds 5 to 10 knots. Waves around 2 feet in the evening, then 1 foot or less.

Winds and waves higher in and near thunderstorms.

GMZ046-192000

Central Gulf from 22N to 26N between 87W and 91W

349 AM EDT Fri Apr 19 2024

TODAY

E to SE winds 10 to 15 kt. Seas 4 to 6 ft.

TONIGHT

E to SE winds 15 to 20 kt. Seas 3 to 5 ft.

SAT

SE winds 10 to 15 kt. Seas 3 to 5 ft.

SAT NIGHT

E to SE winds 15 to 20 kt S of 24N, and E to SE 10 to 15 kt N of 24N. Seas 4 to 6 ft.

SUN

SE winds 15 to 20 kt, diminishing to 10 kt in the afternoon. Seas 4 to 6 ft in E to SE swell.

SUN NIGHT

S of 24N, E winds 10 to 15 kt. N of 24N, variable winds less than 5 kt, becoming NE to E 10 kt late. Seas 3 to 5 ft.

MON

E winds 10 kt. Seas 2 to 4 ft S of 24N, and 4 to 6 ft N of 24N.

MON NIGHT

NE to E winds 10 to 15 kt. Seas 4 to 6 ft.

TUE

E winds 10 to 15 kt. Seas 3 to 5 ft.

TUE NIGHT